

Silicon Diode

GI2401

50V / 16A

DATASHEET

from

www.web-bcs.com

OEM – General Semiconductor

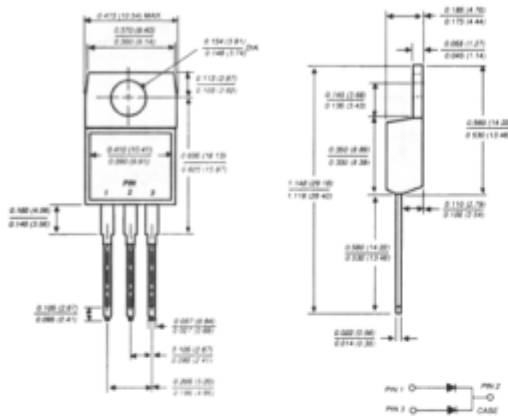
Source: General Semiconductor Databook 1998

GI2401 THRU GI2404

GLASS PASSIVATED PLASTIC RECTIFIER

Reverse Voltage - 50 to 200 Volts Forward Current - 16.0 Amperes

TO-220AB



Dimensions in inches and (millimeters)

FEATURES

- ◆ Plastic package has Underwriters Laboratory Flammability Classification 94V-0
- ◆ Dual rectifier construction, positive centertap
- ◆ Glass passivated chip junctions
- ◆ Low power loss
- ◆ High surge capability
- ◆ Superfast recovery times for high efficiency
- ◆ High temperature soldering guaranteed: 250°C, 0.16" (4.06mm) from case for 10 seconds



MECHANICAL DATA

Case: JEDEC TO-220AB molded plastic body over passivated chips
Terminals: Plated lead solderable per MIL-STD-750, Method 2026
Polarity: As marked
Mounting Position: Any
Mounting Torque: 5 in. - lbs. max.
Weight: 0.08 ounce, 2.24 grams

MAXIMUM RATINGS AND ELECTRICAL CHARACTERISTICS

Ratings at 25°C ambient temperature unless otherwise specified.

	SYMBOLS	GI2401	GI2402	GI2403	GI2404	UNITS
Maximum recurrent peak reverse voltage	VRRM	50	100	150	200	Volts
Maximum RMS voltage	VRMS	35	70	105	140	Volts
Maximum DC blocking voltage	VDC	50	100	150	200	Volts
Maximum average forward rectified current at TC=125°C	IF(AV)	16.0				Amps
Peak forward surge current 8.3ms single half sine-wave superimposed on rated load (JEDEC Method) at TC=125°C	IFSM	125.0				Amps
Maximum instantaneous forward voltage per leg at: IF=4A, TJ=25°C IF=8A, TJ=25°C IF=4A, TJ=100°C IF=8A, TJ=100°C	VF	0.975 0.900 0.800 0.895				Volts
Maximum DC reverse current at rated DC blocking voltage TC=25°C TC=100°C	IR	50.0 150.0		5.0 500.0		µA
Maximum reverse recovery time per leg (NOTE 1)	trr	35.0				ns
Typical junction capacitance per leg (NOTE 2)	CJ	85.0				pF
Typical thermal resistance per leg (NOTE 3)	RθJA RθJC	16.0 2.2				°C/W
Operating junction and storage temperature range	TJ, TSTG	-65 to +150				°C

NOTES:

- (1) Reverse recovery test conditions: IF=0.5A, IR=1.0A, I=0.25A
- (2) Measured at 1.0 MHz and applied reverse voltage of 4.0 Volts
- (3) Thermal resistance from junction to case and from junction to ambient per leg mounted on heatsink

RATINGS AND CHARACTERISTICS CURVES GI2401 THRU GI2404

